



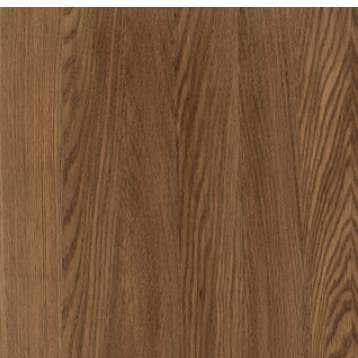
Sort mat lakeret



Sort olieret



Mokka brunolieret



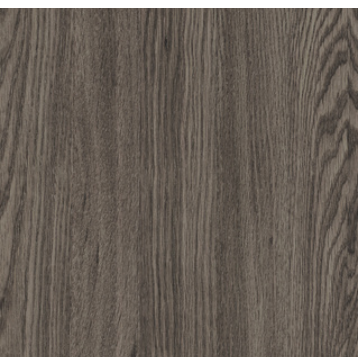
Antik brunolieret



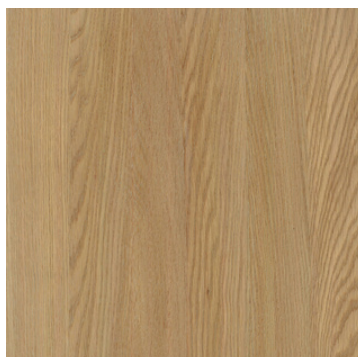
Lysegrå olieret



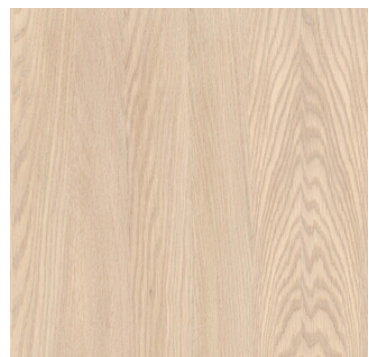
Gråbrun olieret



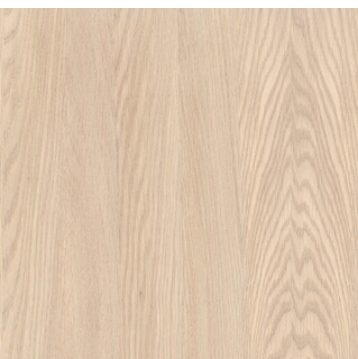
Mørkgrå olieret



Natur olieret



Hvidolieret



Sæbebehandlet

Mine stof - Prisgruppe 1

Martindale: 45.000

Lysægthed: 4 af max 6

Pilling: 4 af max 5

96% polyester 4% nylon

Læs mere i vores
tekstilguide - **klik her**

Shell 196



Grey 65



Alpine stof - Prisgruppe 2

Martindale: 75.000

Lysægthed: 5 af max 6

Pilling: 4 af max 5

96% polyester, 4% acrylic fiber

[Læs mere i vores](#)

[tekstilguide - klik her](#)

Natural 01



Brown 15



Darkbrown 18



Wooly stof - Prisgruppe 3

Martindale: 150.000

Lysægthed: 5 af max 6

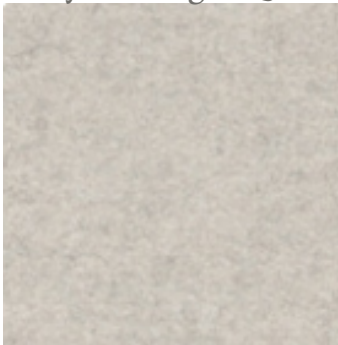
Pilling: 4 af max 5

70% genanvendt uld, 25% polyamide, 5% blandede fibre

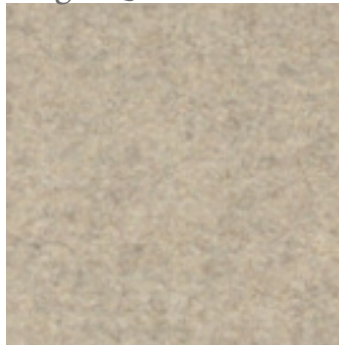
[Læs mere i vores](#)

[tekstilguide - klik her](#)

Ivory Melange 2256



Beige 2151



Taupe 9202



Margrethe stof - Prisgruppe 3

Martindale: 250.000

Lysægthed: 4-5 af max 6

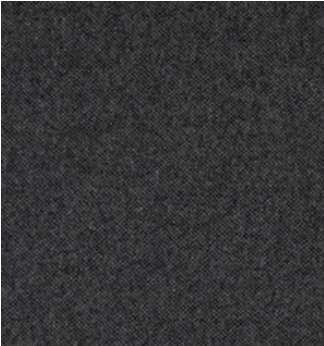
Pilling: 4 af max 5

70% genanvendt uld, 25% polyamide, 5% blandede fibre

[Læs mere i vores](#)

[tekstilguide - klik her](#)

Anthracite 16



Grain stof - Prisgruppe 3

Martindale: 250.000

Lysægthed: 4-5 af max 6

Pilling: 4 af max 5

92% genanvendt polyester / 8% polyester

Læs mere i vores

tekstilguide - [klik her](#)

2287 / 61229



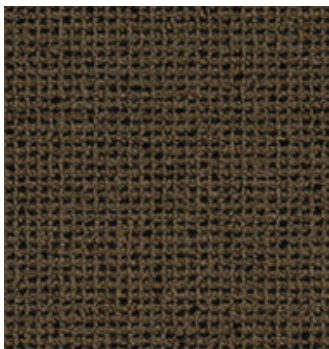
2288 / 61253



2288 / 61248



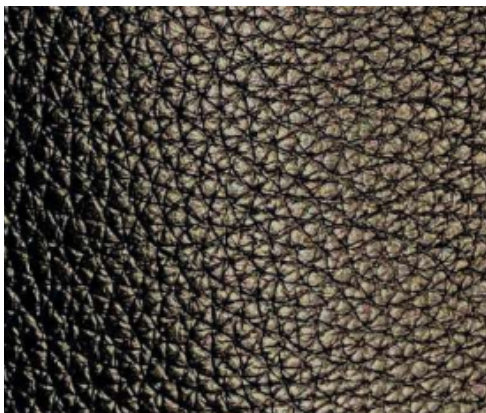
2288 / 61249



Sigma semianilin læder

Læs mere i vores
læderguide - [klik her](#)

Sigma okselæder - sort



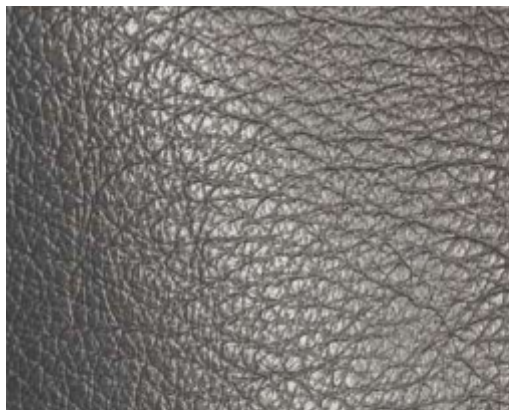
Sigma okselæder - brandy



Sigma okselæder - coffee



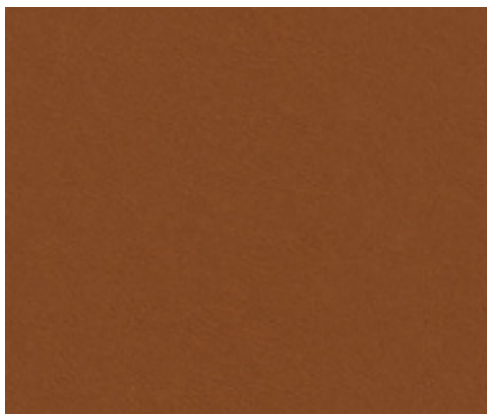
Sigma okselæder - sahara



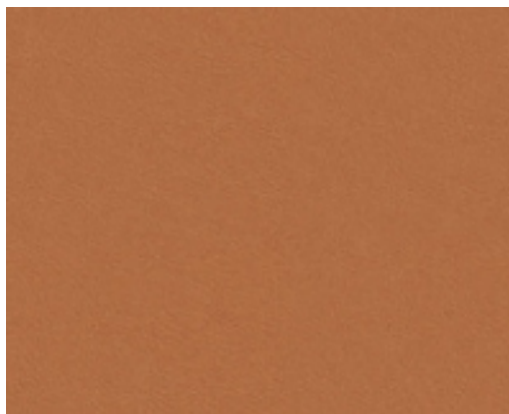
Terra anilin læder

Læs mere i vores
læderguide - [klik her](#)

Soil 20360



Silt 20371



Lime 20365

